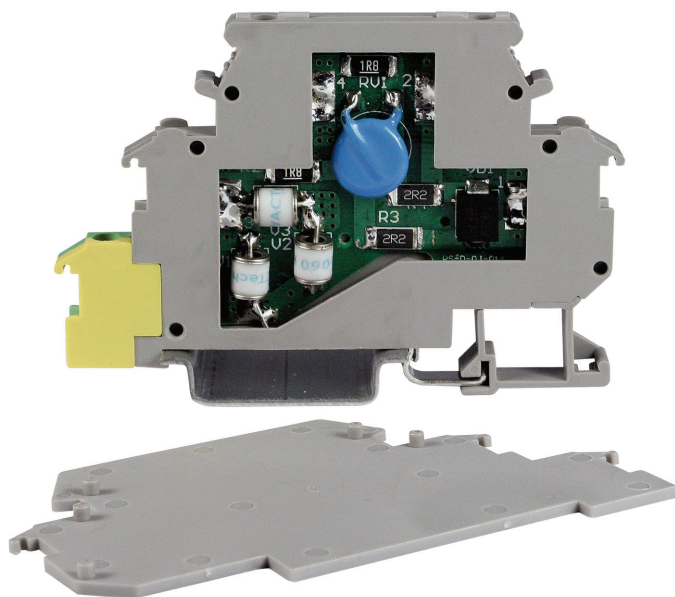
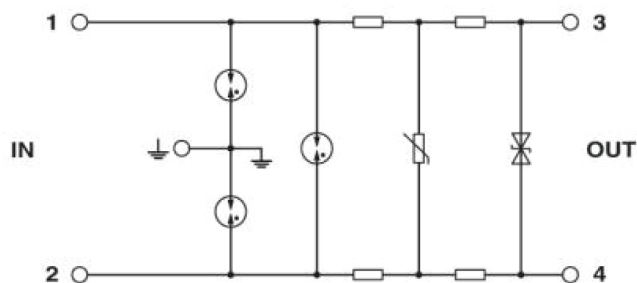


Surge Suppressor Terminal Block ASIDM24-S2A



- Surge Suppressor Terminal Block
- For use in 0-20mA and 4-20mA Control Circuits
- 500 mA, 24 Vdc
- Double Tier, Feed Through Connection
- Screw Clamp Termination
- Gray Housing
- End Cover Included
- DIN Rail Mount 24-14AWG IP20
- IEC061643-21:2000

Basic Circuit Diagram



Technical Data

Model No.			ASIDM24-S2A
Nominal voltage	U_N		24 V
Rated Voltage (Max. Continuous DC Voltage)	U_c		33 V
Rated Voltage (Max. Continuous AC Voltage)	U_c		23 V
Nominal Current	I_L		500 mA
Lightning Impulse Current (10/350)	Per Line	I_{imp}	1 kA
Nominal Discharge Current (8/20)	Per Line	I_n	5 kA
Nominal Discharge Current (8/20)	Total	I_n	10 kA
Output Voltage Limit 1000 V/ μ s	Line-Line	U_p	$\leq 45 \text{ V} / \leq 600 \text{ V}$
Output Residual Voltage 8/20 μ s	Line-Line	U_p	$\leq 53 \text{ V} / \leq 600 \text{ V}$
Series Impedance	Per Line	R	4Ω
Response Time	Line-Line	T_A	$\leq 1 \text{ ns}$
Response Time	Line-PG	T_A	$\leq 100 \text{ ns}$
Operating Temperature Range			$-40^\circ\text{C} \dots +80^\circ\text{C}$
Wire Range			$0.2 \text{ mm}^2 \sim 2.5 \text{ mm}^2$
Mounting			35 mm DIN Rail in accordance with EN50022/DIN 46277-3
Enclosure Material			Gray Thermoplastic, UL 94-V0
Protection Class			IP20
Enclosure Size			79.6 mm (D), 6.2 mm (W), 54.6 mm (H)