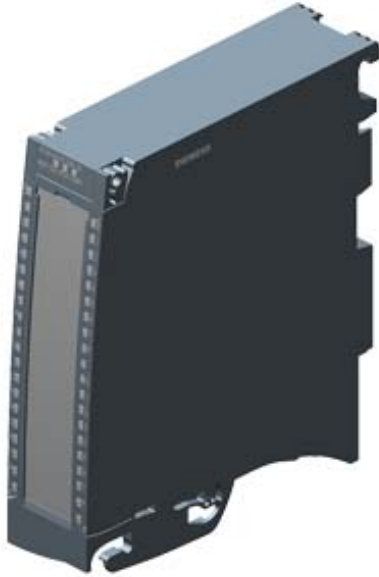


SIMATIC S7-1500, digital output module DQ 32x24 V DC/0.5 A HF; 32 channels in groups of 8; 4 A per group; Single-channel diagnostics; Substitute value: Front connector (screw terminals or push-in) to be ordered separately



General information	
Product type designation	DQ 32x24VDC/0.5A HF
HW functional status	From FS02
Firmware version	V1.1.0
Product function	
<ul style="list-style-type: none"> • I&M data 	Yes; I&M0 to I&M3
<ul style="list-style-type: none"> • Isochronous mode 	Yes
<ul style="list-style-type: none"> • Prioritized startup 	Yes
Engineering with	
<ul style="list-style-type: none"> • STEP 7 TIA Portal configurable/integrated from version 	V13 SP1 / -
<ul style="list-style-type: none"> • PROFIBUS from GSD version/GSD revision 	V1.0 / V5.1
<ul style="list-style-type: none"> • PROFINET from GSD version/GSD revision 	V2.3 / -
Operating mode	
<ul style="list-style-type: none"> • DQ 	Yes
<ul style="list-style-type: none"> • DQ with energy-saving function 	No
<ul style="list-style-type: none"> • PWM 	No
<ul style="list-style-type: none"> • Cam control (switching at comparison values) 	No
<ul style="list-style-type: none"> • Oversampling 	No

- MSO Yes
- Integrated operating cycle counter Yes

Supply voltage

Rated value (DC)	24 V
permissible range, lower limit (DC)	20.4 V
permissible range, upper limit (DC)	28.8 V
Reverse polarity protection	Yes; through internal protection with 7 A per group

Input current

Current consumption, max.	60 mA
---------------------------	-------

Output voltage

Rated value (DC)	24 V
------------------	------

Power

Power available from the backplane bus	1.1 W
--	-------

Power loss

Power loss, typ.	3.5 W
------------------	-------

Digital outputs

Type of digital output	Transistor
Number of digital outputs	32
Current-sourcing	Yes
Digital outputs, parameterizable	Yes
Short-circuit protection	Yes; Clocked electronically
<ul style="list-style-type: none"> • Response threshold, typ. 	1 A
Limitation of inductive shutdown voltage to	L+ (-53 V)
Controlling a digital input	Yes

Switching capacity of the outputs

- with resistive load, max. 0.5 A
- on lamp load, max. 5 W

Load resistance range

- lower limit 48 Ω
- upper limit 12 k Ω

Output voltage

- for signal "1", min. L+ (-0.8 V)

Output current

- for signal "1" rated value 0.5 A
- for signal "1" permissible range, max. 0.5 A
- for signal "0" residual current, max. 0.5 mA

Output delay with resistive load

- "0" to "1", max. 100 μ s
- "1" to "0", max. 500 μ s

Parallel switching of two outputs

• for logic links	Yes
• for uprating	No
• for redundant control of a load	Yes
Switching frequency	
• with resistive load, max.	100 Hz
• with inductive load, max.	0.5 Hz; According to IEC 60947-5-1, DC-13
• on lamp load, max.	10 Hz
Total current of the outputs	
• Current per channel, max.	0.5 A; see additional description in the manual
• Current per group, max.	4 A; see additional description in the manual
• Current per module, max.	16 A; see additional description in the manual
Cable length	
• shielded, max.	1 000 m
• unshielded, max.	600 m
Isochronous mode	
Execution and activation time (TCO), min.	70 µs
Bus cycle time (TDP), min.	250 µs
Interrupts/diagnostics/status information	
Diagnostics function	Yes
Substitute values connectable	Yes
Alarms	
• Diagnostic alarm	Yes
• Maintenance interrupt	Yes
Diagnoses	
• Monitoring the supply voltage	Yes
• Wire-break	Yes
• Short-circuit	Yes
• Group error	Yes
Diagnostics indication LED	
• RUN LED	Yes; green LED
• ERROR LED	Yes; red LED
• MAINT LED	Yes; Yellow LED
• Monitoring of the supply voltage (PWR-LED)	Yes; green LED
• Channel status display	Yes; green LED
• for channel diagnostics	Yes; red LED
• for module diagnostics	Yes; red LED
Potential separation	
Potential separation channels	
• between the channels	No
• between the channels, in groups of	8
• between the channels and backplane bus	Yes

Isolation	
Isolation tested with	707 V DC (type test)
Standards, approvals, certificates	
Suitable for safety functions	No
Suitable for safety-related tripping of standard modules	Yes; From FS02
Highest safety class achievable for safety-related tripping of standard modules	
<ul style="list-style-type: none"> • Performance level according to ISO 13849-1 • Category according to ISO 13849-1 • SILCL according to IEC 62061 	PL d Cat. 3 SILCL 2
Ambient conditions	
Ambient temperature during operation	
<ul style="list-style-type: none"> • horizontal installation, min. • horizontal installation, max. • vertical installation, min. • vertical installation, max. 	-30 °C; From FS03 60 °C -30 °C; From FS03 40 °C
Altitude during operation relating to sea level	
<ul style="list-style-type: none"> • Installation altitude above sea level, max. 	5 000 m; Restrictions for installation altitudes > 2 000 m, see manual
Dimensions	
Width	35 mm
Height	147 mm
Depth	129 mm
Weights	
Weight, approx.	280 g
last modified:	09/11/2020