



TR 335-12Z-RMS

- Metal enclosure
- Wide range of alternative actuators
- Good resistance to oil and petroleum spirit
- 40,5 mm x 76 mm x 38 mm
- Actuator heads can be repositioned by 4 x 90°
- Design to EN 50041

Data

Ordering data

Product type description	TR 335-12Z-RMS
Article number (order number)	151214104
eCl@ss number, Version 9.0	27-27-26-01
eCl@ss number, Version 11.0	27-27-26-01
eCl@ss number, Version 12.0	27-27-26-01
ETIM number, version 7.0	EC000030
ETIM number, version 6.0	EC000030

Approval - Standards

Certificates	cULus CCC EAC
--------------	---------------------

General data

Housing construction form	Norm construction design
Actuator type to DIN EN 50041	C

Enclosure coating material	painted
Material of the contacts, electrical	Silver
Gross weight	210 g

Safety appraisal

Standards	BG-GS-ET-15 EN ISO 13849-1 EN 60947-5-1
Mission Time	20 Year(s)

Mechanical data

Actuating element	Roller plunger
Mechanical life, minimum	30,000,000 Operations
Actuating force, minimum	17 N
Actuating speed, maximum	0.5 m/s
Note (Actuating speed)	Actuating speed with actuating angle 30° to switch axis

Mechanical data - Connection technique

Terminal Connector	Screw terminals M20 x 1.5
Cable section, minimum	0.75 mm ²
Cable section, maximum	2.5 mm ²
Note (Cable section)	All indications including the conductor ferrules.

Mechanical data - Dimensions

Length of sensor	38 mm
Width of sensor	40.5 mm
Height of sensor	116.6 mm

Ambient conditions

Ambient temperature, minimum	-30 °C
Ambient temperature, maximum	+80 °C

Electrical data

Thermal test current	10 A
Required rated short-circuit current to EN 60947-5-1	1,000 A
Utilisation category AC-15	230 VAC
Utilisation category AC-15	4 A
Utilisation category DC-13	24 VDC
Utilisation category DC-13	4 A
Switching frequency	5,000 /h

Ordering code

Product type description:

(1)(2) 3(3)5-(4)Z(5)-(6)-(7)-(8)-(9)

(1)		
Z		Snap action
T		Slow action (not for AF/S)
(2)		
S		Plunger S
R		Roller plunger R
H		Roller lever H
10H		Rod lever 10H
7H		Roller lever 7H
1K		Offset roller lever 1K
3K		Angle roller lever 3K
RMS		Brass roller
(3)		
3		slim design
215		large design
(4)		
11		1 NO contacts/1 NC contact
02		2 NC contact
20		2 NO contacts (not suitable for safety applications)
01/01		1 NC contact left / 1 NC contact right
12		1 NO contact/2 NC contacts
03		3 NC contact
(5)		
H		Slow action with staggered contacts
UE		Slow action with overlapping contacts
2272		2272 Special roller bolt with collar
1183		with aluminium rod
1699-1		Exterior stainless steel bolts and clamp

Pictures

Product picture (catalogue individual photo)

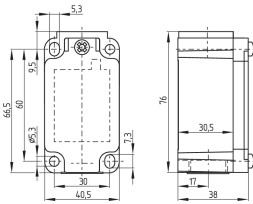


ID: k335rf01

| 727.6 kB | .jpg | 352.778 x 767.292 mm - 1000 x 2175 px - 72 dpi

| 71.3 kB | .png | 74.083 x 160.867 mm - 210 x 456 px - 72 dpi

Dimensional drawing basic component



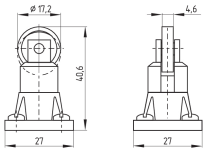
ID: 1-335g01

| 96.7 kB | .cdr |

| 4.5 kB | .png | 74.083 x 51.506 mm - 210 x 146 px - 72 dpi

| 105.8 kB | .jpg | 352.778 x 245.886 mm - 1000 x 697 px - 72 dpi

Dimensional drawing actuator



ID: 1r336g01

| 51.1 kB | .cdr |

| 6.6 kB | .png | 74.083 x 52.211 mm - 210 x 148 px - 72 dpi

| 66.1 kB | .jpg | 352.778 x 248.003 mm - 1000 x 703 px - 72 dpi

Operating principle



ID: 235rz01

| 15.2 kB | .cdr |

| 149.7 kB | .jpg | 352.778 x 799.394 mm - 1000 x 2266 px - 72 dpi

| 2.9 kB | .png | 74.083 x 167.922 mm - 210 x 476 px - 72 dpi

The details and data referred to have been carefully checked. Images may diverge from original. Further technical data can be found in the manual. Technical amendments and errors possible.

Generated on: 2022-03-14, 4:28 a.m.