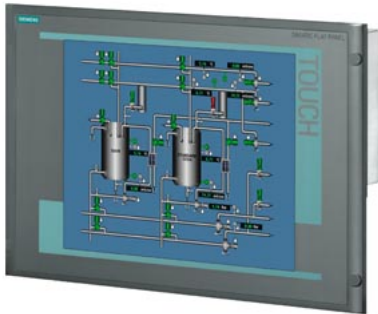


*** spare part *** SIMATIC Flat Panel 15T, 15-inch Touch TFT screen with 1024x 768 pixels resolution for 24 V DC, VGA, DVI-D interface, including VGA cable 1.8 m



General information	
Product type designation	Flat Panel
Display	
Design of display	TFT display, LED backlighting
Screen diagonal	15.6 in; 15"
Display width	304.1 mm
Display height	228.1 mm
On Screen Display (OSD) configuration	Yes
Number of colors	16 000 000; 16.2 million
Viewing angle	100° x 90° (min)
Resolution (pixels)	
• Image resolution	1 024 x 768
• Horizontal image resolution	1 024 pixel
• Vertical image resolution	768 pixel
General features	
• Brightness/contrast	> 260 cd/m ² / 350:1
• Detachable from computer unit	5 m
Backlighting	
• Type of backlighting	LED, dimmable
• MTBF backlighting (at 25 °C)	50 000 h; At 25°C
• Backlight dimmable	Yes; 0-100 %
Control elements	
Control elements	single-touch screen
Input device	
• Integrated mouse cursor control	No
Touch operation	
• Design as touch screen	Yes
Installation type/mounting	
Design	Built-in unit
Front mounting	Yes
VESA mounting	No
Built-in unit	Yes; Portrait mode possible
maximum permitted forward tilt angle from vertical	35°; max. 40°C
maximum permitted backward tilt angle from vertical	70°; max. 40°C
Supply voltage	
Type of supply voltage	DC
permissible range, lower limit (DC)	19.2 V
permissible range, upper limit (DC)	28.8 V
Interfaces	

Video interfaces	
• DVI-D	Yes
Degree and class of protection	
IP (at the front)	IP65
Standards, approvals, certificates	
CE mark	Yes
CSA approval	Yes
UL approval	Yes
EAC (formerly Gost-R)	No
Marine approval	
• Germanischer Lloyd (GL)	Yes; Optional
• American Bureau of Shipping (ABS)	Yes; Optional
• Bureau Veritas (BV)	Yes; Optional
• Det Norske Veritas (DNV)	Yes; Optional
• Lloyds Register of Shipping (LRS)	Yes; Optional
Ambient conditions	
Ambient temperature during operation	
• min.	0 °C
• max.	50 °C
Ambient temperature during storage/transportation	
• min.	-20 °C
• max.	70 °C
Mechanics/material	
Enclosure material (front)	
• Aluminum	Yes
Dimensions	
Width of the housing front	483 mm
Height of housing front	310 mm
Mounting cutout, width	450 mm
Mounting cutout, height	290 mm
Overall depth	55 mm
last modified:	12/16/2020 