

**en** Package insert  
**de** Beipackzettel  
**tr** Paket ek parçası

**Climatix™ range**  
**Climatix™ Sortiment**  
**Climatix™ serisi**

POL 68X.XX/XXX  
POL 63X.00/XXX,  
POL 925.00/XXX, POL 945.00/XXX  
POL 965.00/XXX, POL 985.00/XXX  
POL 94U.00/XXX, POL 94E.00/XXX  
POL 955.00/XXX,  
POL 902.00/XXX, POL 904.00/XXX  
POL 906.00/XXX, POL 907.00/XXX  
POL 908.00/XXX, POL 909.00/XXX  
POL 96U.00/XXX, POL 96E.00/XXX  
POL 98U.00/XXX, POL 98E.00/XXX

**Climatix™**

## Instructions for use of the connection terminals

## Vorschrift für die Verwendung der Anschlussklemmen Bağlantı terminalleri kullanım kılavuzu

**Climatix 6XX controllers with inbuilt HMI**  
**Climatix 6XX-Regler mit eingebautem HMI**  
**Dahili HMI'lı Climatix 6XX kontrol cihazları**



**Communication modules and Climatix extensions**  
**Kommunikationsmodule und Climatix-Erweiterungen**  
**İletişim modülleri ve Climatix uzantıları**



Electrical connections to the Climatix 6XX controllers are only permitted via components supplied by Phoenix. The optional connectors listed below are available on request.

Elektrische Verbindungen zum Climatix 6XX-Regler dürfen nur durch Komponenten der Firma Phoenix hergestellt werden. Die erlaubten Stecker sind nachfolgend aufgeführt und müssen von Firma Phoenix bezogen werden.

Climatix 6XX kontrol cihazlarına yapılan elektrik bağlantılarına, yalnızca Phoenix tarafından sağlanan bileşenler aracılığıyla izin verilir.

Aşağıda listelenen isteğe bağlı konnektörler istek üzerine mevcuttur.

Link: [www.phoenixcontact.com](http://www.phoenixcontact.com)

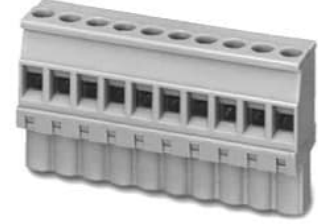
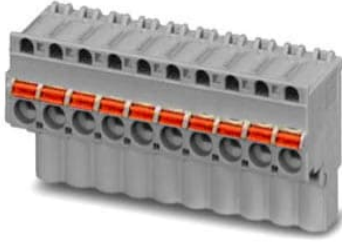
## Example of connectors / Beispiele Anschlussklemmen / Konnektör örnekleri

Phoenix connectors / Phoenix Anschlussklemmen / Phoenix konnektörler

FKCVW

KCT

MVSTBW



### Phoenix connectors / Phoenix Anschlussklemmen

#### Controllers / Regler / Kontrol cihazları (POL 68X.XX/XXX / POL 63X.XX/XXX )

Poles Polzahl Kutuplar	Spring cage, cable side entry Yaylı kafes, kablo yan girişi	Spring cage, cable top entry Yaylı kafes, kablo üst girişi	Srews, cable side entry Cıvatalar, kablo yan girişi	Recommended color Önerilen renk	Required POL 68X Gerekli POL 68X	Required POL 63X Gerekli POL 63X
2	FKCVW 2,5/2-ST	FKCT 2,5/2-ST	MVSTBW 2,5/2-ST	Orange	1	1
2	FKCVW 2,5/2-ST	FKCT 2,5/2-ST	MVSTBW 2,5/2-ST	Grey	1	2
3	FKCVW 2,5/3-ST	FKCT 2,5/3-ST	MVSTBW 2,5/3-ST	Grey	6	2
4	FKCVW 2,5/4-ST	FKCT 2,5/4-ST	MVSTBW 2,5/4-ST	Grey	-	1
5	FKCVW 2,5/5-ST	FKCT 2,5/5-ST	MVSTBW 2,5/5-ST	Grey	1	-
6	FKCVW 2,5/6-ST	FKCT 2,5/6-ST	MVSTBW 2,5/6-ST	Grey	1	1
7	FKCVW 2,5/7-ST	FKCT 2,5/7-ST	MVSTBW 2,5/7-ST	Grey	2	-
8	FKCVW 2,5/8-ST	FKCT 2,5/8-ST	MVSTBW 2,5/8-ST	Grey	2	3

#### Extension module 6 I/Os, 8 I/Os (POL925.00XXX // POL945.00/XXX)

Poles Polzahl Kutuplar	Spring cage, cable side entry Yaylı kafes, kablo yan girişi	Spring cage, cable top entry Yaylı kafes, kablo üst girişi	Srews, cable side entry Cıvatalar, kablo yan girişi	Recommended color Önerilen renk	Required POL 925 Gerekli POL 925	Required POL 945 Gerekli POL 945
3	FKCVW 2,5/3-ST	FKCT 2,5/3-ST	MVSTBW 2,5/3-ST	Grey	1	2
6	FKCVW 2,5/6-ST	FKCT 2,5/6-ST	MVSTBW 2,5/6-ST	Grey	1	
7	FKCVW 2,5/7-ST	FKCT 2,5/7-ST	MVSTBW 2,5/7-ST	Grey		1

#### Extension module 14 I/Os, 15 I/Os, 26 I/Os (POL955.00/XXX // POL965.00/XXX // POL985.00/XXX)

Poles Polzahl Kutuplar	Spring cage, cable side entry Yaylı kafes, kablo yan girişi	Spring cage, cable top entry Yaylı kafes, kablo üst girişi	Srews, cable side entry Cıvatalar, kablo yan girişi	Recommended Color Önerilen renk	Required POL 955 Gerekli POL 955	Required POL 965 Gerekli POL 965	Required POL 985 Gerekli POL 985
2	FKCVW 2,5/2-ST	FKCT 2,5/2-ST	MVSTBW 2,5/2-ST	Grey	1	1	
3	FKCVW 2,5/3-ST	FKCT 2,5/3-ST	MVSTBW 2,5/3-ST	Grey	1	1	2
5	FKCVW 2,5/5-ST	FKCT 2,5/5-ST	MVSTBW 2,5/5-ST	Grey			2
6	FKCVW 2,5/6-ST	FKCT 2,5/6-ST	MVSTBW 2,5/6-ST	Grey	3		1
7	FKCVW 2,5/7-ST	FKCT 2,5/7-ST	MVSTBW 2,5/7-ST	Grey		1	1
8	FKCVW 2,5/8-ST	FKCT 2,5/8-ST	MVSTBW 2,5/8-ST	Grey		2	2

#### ECV extension module (POL94E.00XXX // POL94U.00/XXX)

Poles Polzahl Kutuplar	Spring cage, cable side entry Yaylı kafes, kablo yan girişi	Spring cage, cable top entry Yaylı kafes, kablo üst girişi	Srews, cable side entry Cıvatalar, kablo yan girişi	Recommended color Önerilen renk	Required POL 994E Gerekli POL 994E	Required POL 994U Gerekli POL 994U
2	FKCVW 2,5/2-ST	FKCT 2,5/2-ST	MVSTBW 2,5/2-ST	Grey	1	1
3	FKCVW 2,5/3-ST	FKCT 2,5/3-ST	MVSTBW 2,5/3-ST	Grey	1	1
4	FKCVW 2,5/4-ST	FKCT 2,5/4-ST	MVSTBW 2,5/4-ST	Grey	1	1
7	FKCVW 2,5/7-ST	FKCT 2,5/7-ST	MVSTBW 2,5/7-ST	Grey	1	1

**ECV2 extension module (POL96U/E.00/XXX // POL98U/E.00/XXX)**

Poles Polzahl Kutuplar	Spring cage, cable side entry Yaylı kafes, kablo yan girişi	Spring cage, cable top entry Yaylı kafes, kablo üst girişi	Srews, cable side entry Cıvatalar, kablo yan girişi	Recommended Color Önerilen renk	Required POL 96U/E Gerekli POL 96U/E	Required POL 98U/E Gerekli POL 98U/E
2	FKCVW 2,5/2-ST	FKCT 2,5/2-ST	MVSTBW 2,5/2-ST	Grey	1	
3	FKCVW 2,5/3-ST	FKCT 2,5/3-ST	MVSTBW 2,5/3-ST	Grey	1	2
5	FKCVW 2,5/5-ST	FKCT 2,5/5-ST	MVSTBW 2,5/5-ST	Grey	2	4
6	FKCVW 2,5/6-ST	FKCT 2,5/6-ST	MVSTBW 2,5/6-ST			1
7	FKCVW 2,5/7-ST	FKCT 2,5/7-ST	MVSTBW 2,5/7-ST	Grey	1	1
8	FKCVW 2,5/8-ST	FKCT 2,5/8-ST	MVSTBW 2,5/8-ST	Grey	3	3

**LON communication module (POL906.00/XXX// POL907.00/XXX)**

Poles Polzahl Kutuplar	Spring cage, cable side entry Yaylı kafes, kablo yan girişi	Spring cage, cable top entry Yaylı kafes, kablo üst girişi	Srews, cable side entry Cıvatalar, kablo yan girişi	Recommended Color Önerilen Renk	Required per module Gerekli modül başın
2	FKCVW 2,5/2-ST	FKCT 2,5/2-ST	MVSTBW 2,5/2-ST	Grey	1



**BACnet/MSTP communication module (POL904.00/XXX// POL909.00/XXX)**

Poles Polzahl Kutuplar	Spring cage, cable side entry Yaylı kafes, kablo yan girişi	Spring cage, cable top entry Yaylı kafes, kablo üst girişi	Srews, cable side entry Cıvatalar, kablo yan girişi	Recommended color Önerilen renk	Required per module Gerekli modül başın
3	FKCVW 2,5/3-ST	FKCT 2,5/3-ST	MVSTBW 2,5/3-ST	Grey	1

**Modbus communication module (POL902.00/XXX)**

Poles Polzahl Polzahl	Spring cage, cable side entry Yaylı kafes, kablo yan girişi	Spring cage, cable top entry Yaylı kafes, kablo üst girişi	Srews, cable side entry Cıvatalar, kablo yan girişi	Recommended Color Önerilen renk	Required per module Gerekli modül başın
3	FKCVW 2,5/3-ST	FKCT 2,5/3-ST	MVSTBW 2,5/3-ST	Grey	2

**Connectors for peripheral bus and communication interfaces**

	Peripheral bus Çevresel bus	Board-to-board (not included), Phoenix Board-to-wire (not included), Phoenix Note: Included with all connector sets for extension modules Panodan panoya (dahil değil), Phoenix Panodan kabloya (dahil değil), Phoenix Not: Genişletme modülleri için tüm konnektör setleriyle birlikte verilir	ZEC1,0/4-LPV-3,5 GY35AUC2C11 ZEC1,0/4-ST-3,5 GY35AUC1R1,4
	COMM interface COMM arayüzü	Board-to-board (not included), Phoenix Note: Included with all communication module products Panodan panoya (dahil değil), Phoenix Not: Tüm iletişim modülü ürünlerine dahildir	ZEC1,0/10-LPV-3,5 GY35AUC2C11

Issued by  
Siemens Switzerland Ltd  
Building Technologies Division  
International Headquarters  
Theilerstrasse 1a  
6300 Zug  
Switzerland  
Tel. +41 58-724 24 24

[www.siemens.com/buildingtechnologies](http://www.siemens.com/buildingtechnologies)

© 2012, Siemens Switzerland Ltd

Technical specifications and availability subject to change without notice.