

Surge protection device - C-UFB- 5DC/E - 2782300

Please be informed that the data shown in this PDF Document is generated from our Online Catalog. Please find the complete data in the user's documentation. Our General Terms of Use for Downloads are valid (<http://phoenixcontact.com/download>)



Attachment plug with surge voltage coarse and fine protection, for coaxial signal interfaces with floating shield, signal voltage 5 V. Connection: BNC socket/plug

Why buy this product

- Ground connection via separately led cable
- For insertion in the cable

RoHS IP20

Key Commercial Data

Packing unit	1 STK
GTIN	 4 017918 069445
GTIN	4017918069445
Weight per Piece (excluding packing)	114.000 g
Custom tariff number	85363010
Country of origin	Germany

Technical data

Dimensions

Height	93 mm
Width	25.4 mm
Length	25.4 mm

Ambient conditions

Ambient temperature (operation)	-40 °C ... 80 °C
Degree of protection	IP20

General

Surge protection device - C-UFB- 5DC/E - 2782300

Technical data

General

Housing material	Aluminum
Color	black
Standards for clearances and creepage distances	VDE 0110-1
	IEC 60664-1
Mounting type	Connection-specific intermediate plugging
Type	Attachment plug
Direction of action	Line-Shield/Earth Ground

Protective circuit

IEC test classification	C2
	C3
	D1
Maximum continuous voltage U_C	5 V DC
Rated current	185 mA (25 °C)
Operating effective current I_C at U_C	$\leq 300 \mu\text{A}$
Residual current I_{PE}	$\leq 2 \mu\text{A}$
Nominal discharge current I_n (8/20) μs (line-earth)	10 kA
Nominal discharge current I_n (8/20) μs (line-shield)	10 kA
Total discharge current I_{total} (8/20) μs	20 kA
Output voltage limitation at 1 kV/ μs (line-earth) spike	$\leq 500 \text{ V}$
Output voltage limitation at 1 kV/ μs (line-shield) spike	$\leq 35 \text{ V}$
Output voltage limitation at 1 kV/ μs (line-shield) static	$\leq 15 \text{ V}$
Residual voltage at I_n (line-shield)	$\leq 10 \text{ V}$
Voltage protection level U_p (line-earth)	$\leq 500 \text{ V}$ (C1 - 1 kV/500 A)
	$\leq 500 \text{ V}$ (C3 - 10 A)
Voltage protection level U_p (line-shield)	$\leq 25 \text{ V}$ (C3 - 10 A)
	$\leq 55 \text{ V}$ (C1 - 1 kV/500 A)
Response time t_A (line-earth)	$\leq 100 \text{ ns}$
Response time t_A (line-shield)	$\leq 500 \text{ ns}$
Input attenuation aE , asym.	typ. 2 dB ($\leq 20 \text{ MHz}$)
Cut-off frequency f_g (3 dB), asym. (shield) in 50 Ohm system	typ. 90 MHz
Surge protection fault message	none
Impulse durability (line-earth)	C2 - 10 kV/5 kA
	D1 - 2.5 kA

Connection data

Connection method	BNC 50 Ω
Connection method IN	BNC socket

Surge protection device - C-UFB- 5DC/E - 2782300

Technical data

Connection data

Connection method OUT	BNC plug
-----------------------	----------

Connection, equipotential bonding

Connection method	PVC litz wire
-------------------	---------------

Standards and Regulations

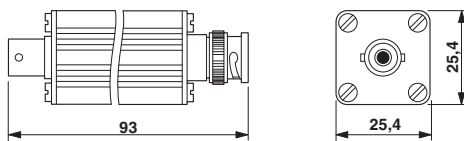
Standards/regulations	IEC 61643-21
Standards/specifications	IEC 61643-21 2000

Environmental Product Compliance

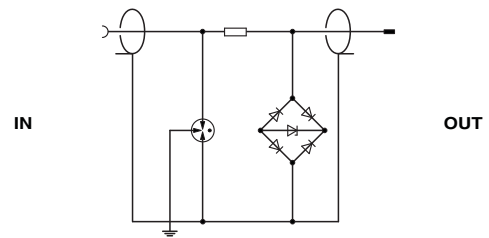
China RoHS	Environmentally Friendly Use Period = 50
	For details about hazardous substances go to tab "Downloads", Category "Manufacturer's declaration"

Drawings

Dimensional drawing



Circuit diagram



Classifications

eCl@ss

eCl@ss 4.0	27140201
eCl@ss 4.1	27130801
eCl@ss 5.0	27130801
eCl@ss 5.1	27130800
eCl@ss 6.0	27130800
eCl@ss 7.0	27130807
eCl@ss 8.0	27130807
eCl@ss 9.0	27130807

Surge protection device - C-UFB- 5DC/E - 2782300

Classifications

ETIM

ETIM 2.0	EC000943
ETIM 3.0	EC000943
ETIM 4.0	EC000943
ETIM 5.0	EC000943
ETIM 6.0	EC000943

UNSPSC

UNSPSC 6.01	30212010
UNSPSC 7.0901	39121610
UNSPSC 11	39121610
UNSPSC 12.01	39121610
UNSPSC 13.2	39121620

Approvals

Approvals

Approvals

EAC

Ex Approvals

Approval details

EAC		RU C- DE.A*30.B01561
-----	---	-------------------------

Accessories

Accessories

Flange coupling

Surge protection device - C-UFB- 5DC/E - 2782300

Accessories

Connector/Adapter - BNC-V 50 - 2805041



BNC connector, single-level, for mounting on NS 32 or NS 35/7.5, wave impedance: 50 Ohm

Connector/Adapter - BNC-DV 50 - 2805038



BNC connector, double-level, for mounting on NS 32 or NS 35/7.5, wave impedance: 50 Ohm
